

MONTHLY MEMBERSHIP PROGRESS REPORT

District 14 L

Results as of: 7/31/2025

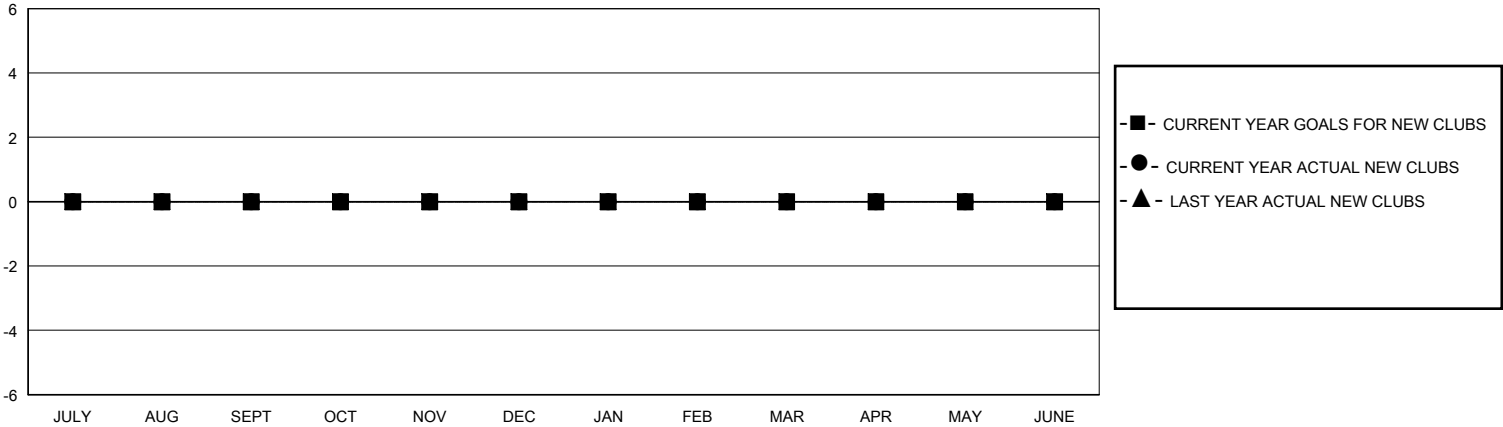
GMT:

LOCATION PENNSYLVANIA

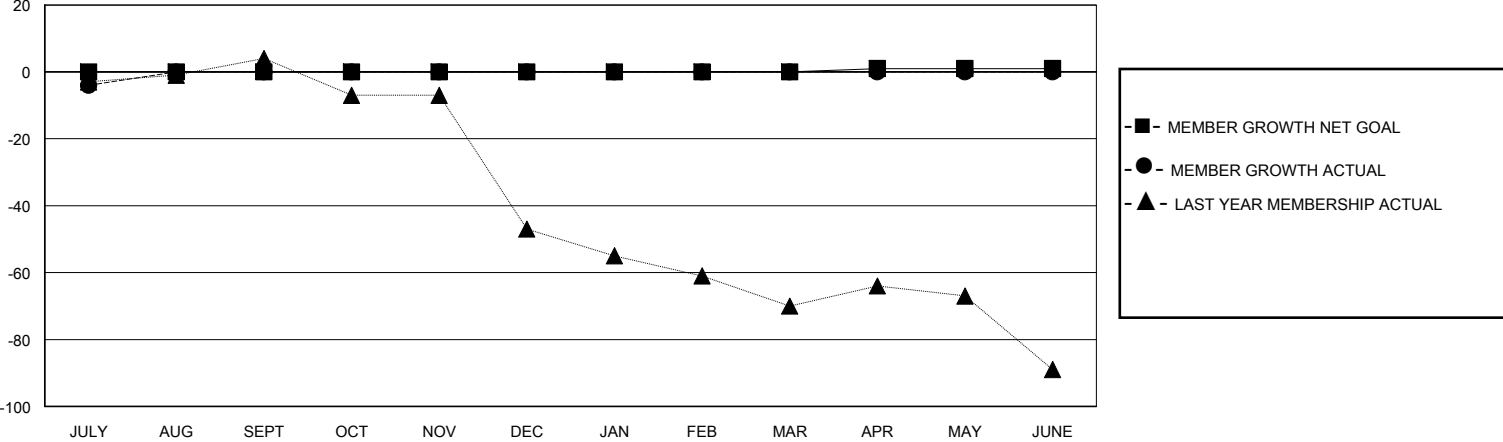
GMT CA

| Clubs | | | | Members | | | |
|-----------------------|---------------|-----------|---------------|-----------------------|------------------------|----------------------|--|
| RESULTS FOR 2025-2026 | | | | RESULTS FOR 2025-2026 | | | |
| QUARTER | NEW CLUB GOAL | NEW CLUBS | DROPPED CLUBS | QUARTER | MEMBER GROWTH NET GOAL | MEMBER GROWTH ACTUAL | DROPPED MEMBERS ACTUAL (including transfers) |
| JULY/AUG/SEPT | 0 | 0 | 1 | JULY/AUG/SEPT | 0 | 9 | 13 |
| OCT/NOV/DEC | 0 | 0 | 0 | OCT/NOV/DEC | 0 | 0 | 0 |
| JAN/FEB/MAR | 0 | 0 | 0 | JAN/FEB/MAR | 0 | 0 | 0 |
| APR/MAY/JUNE | 0 | 0 | 0 | APR/MAY/JUNE | 1 | 0 | 0 |

GOALS AND ACTUAL NEW CLUBS CUMULATIVE



GOALS AND ACTUAL MEMBERS CUMULATIVE



| | | |
|---|---|--|
| DROPPED CLUBS: 1 | 4 CLUBS OF 33 ADDED 1 OR MORE NEW MEMBERS | <u>GENDER DISTRIBUTION</u> MALE 525 (69.54%) FEMALE 230 (30.46%) |
| <u>DROPPED MEMBERS</u> DECEASED 5 CLUB CANCELLED 6 OTHER 2 TOTAL 13 | CLICK HERE FOR CUMULATIVE MEMBERSHIP DATA | TOTAL FAMILY UNIT MEMBERS 142 FAMILY MEMBERS PAYING HALF DUES 75 |